

INSTALLATION INSTRUCTIONS

DESCRIPTION: Main Stand Kit
 PART NUMBER: BW3-F71A0-V0
 MODEL: '21+ Ténéré 700



⚠ WARNING

Please read and understand these instructions completely before installation to avoid possible injury, or damage to the accessory or vehicle.

WARRANTY INFORMATION:

In the United States, see your Yamaha dealer for a copy of the Yamaha Genuine Parts and Accessories Limited Warranty.

NOTICE:

Installation of this kit requires a torque wrench and should be performed by an authorized Yamaha dealer or a qualified mechanic.

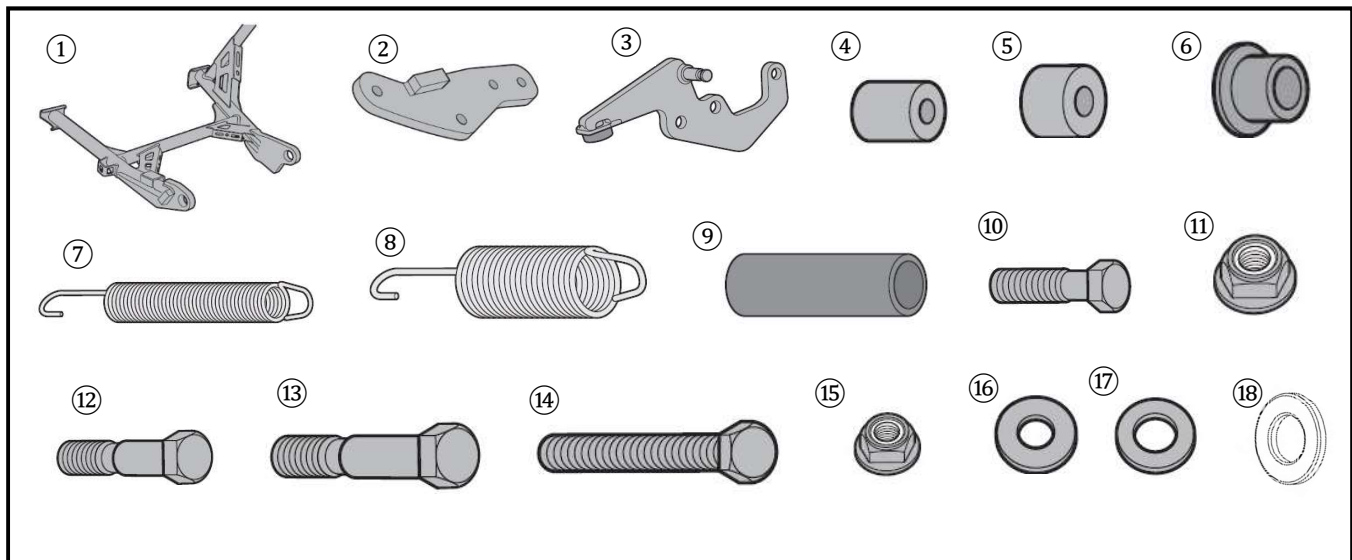
DEALER OR INSTALLER:

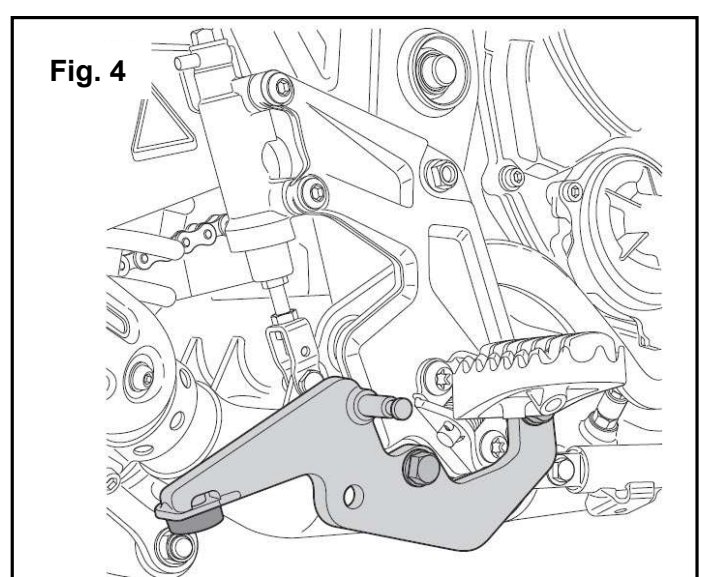
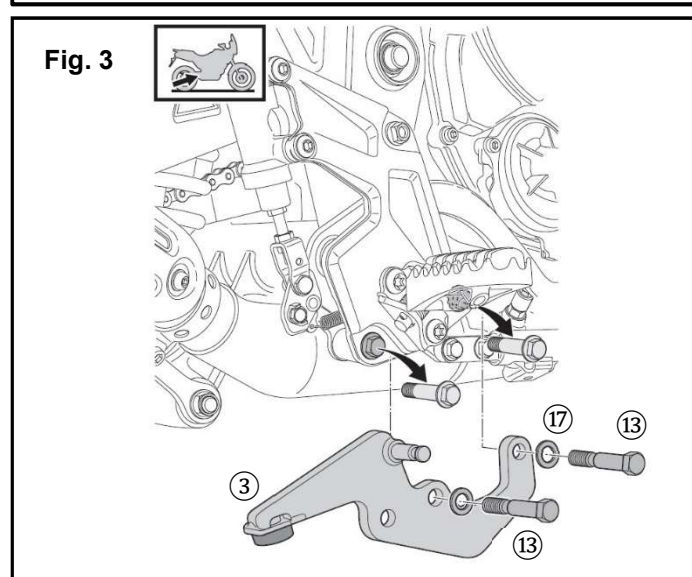
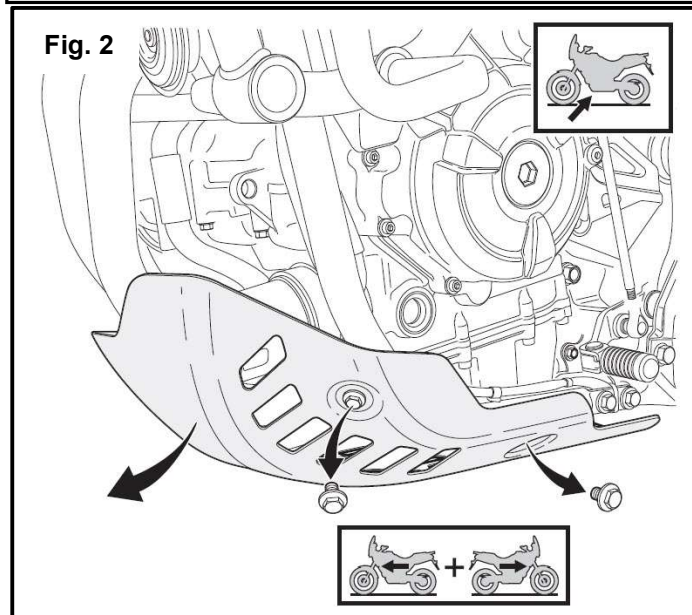
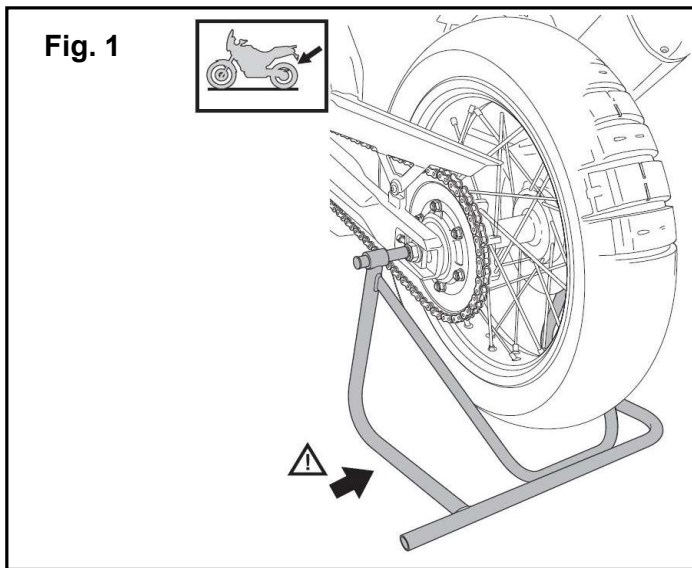
These instructions contain important information for future reference and *must* be given to the customer.

PARTS LIST:

No.	Part Number	Description	Qty
--	BW3-F71A0-V0	Main Stand Kit	--
①	-	Main Stand	1
②	-	Left Mounting Bracket	1
③	-	Right Mounting Bracket	1
④	-	Spacer 8.5mm inside dia.	2
⑤	-	Spacer 10.5mm inside dia.	1
⑥	-	Flanged bushing	2
⑦	-	Spring 1	1
⑧	-	Spring 2	1
⑨	-	Spring Sleeve	1
⑩	-	M10x40mm Hex Head Bolt	2
⑪	-	M10 Flanged Nylon Locking Nut	2
⑫	-	M10x55mm Hex Head Bolt	1
⑬	-	M10x60mm Hex Head Bolt	2
⑭	-	M8x75mm Hex Head Bolt	2
⑮	-	M8 Flanged Nylon Locking Nut	2
⑯	-	M8 Washer	2
⑰	-	M10 Washer	5
⑱	-	M19 Washer	1

* Part supplied with kit only and not available separately.



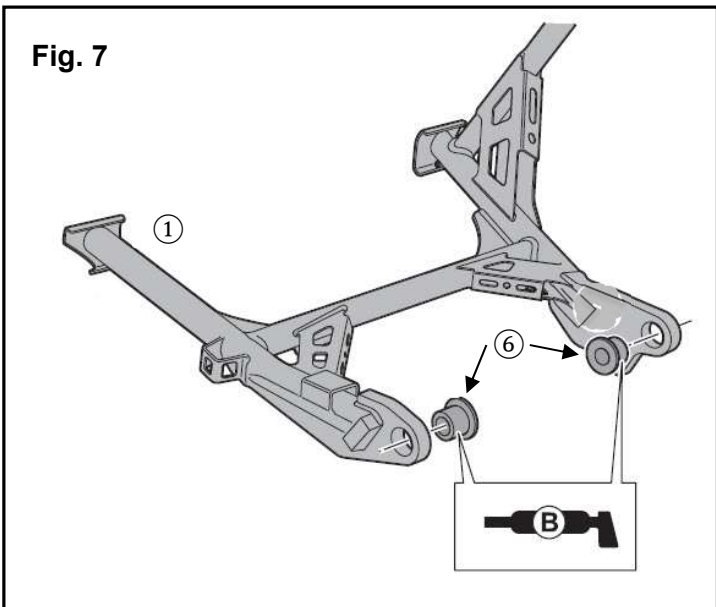
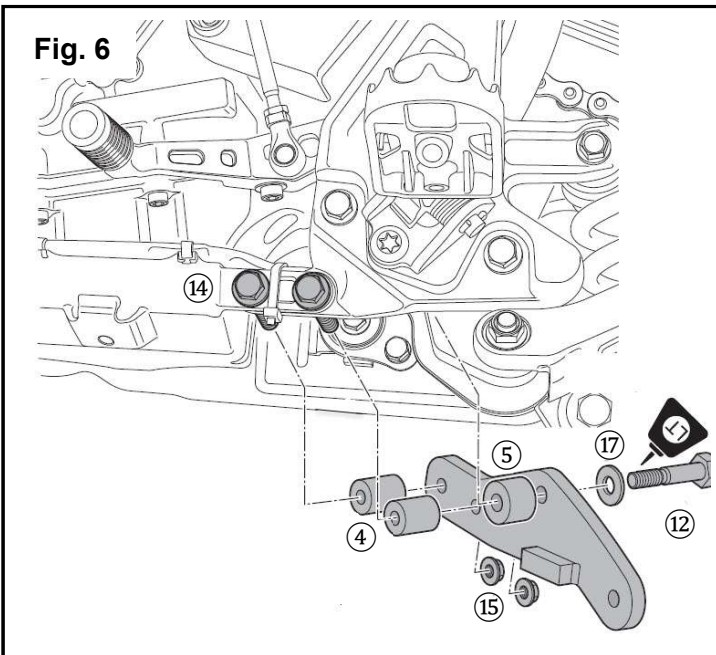
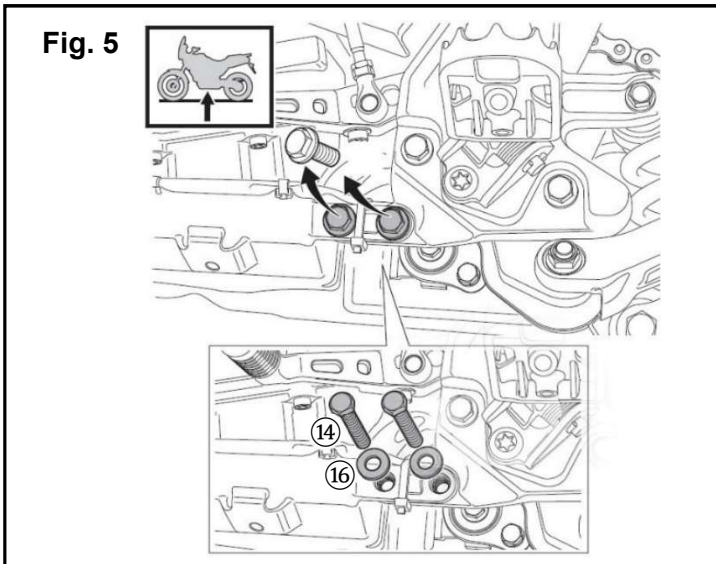


PREPARATION:

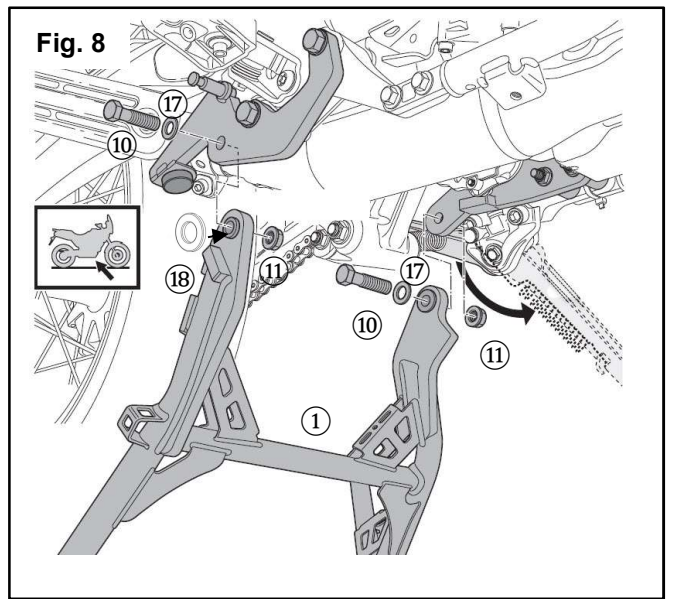
- Place the vehicle on a secure and level surface.
- Have a rear axle stand to hold the motor cycle upright.
- Clean the mounting surfaces before beginning installation.

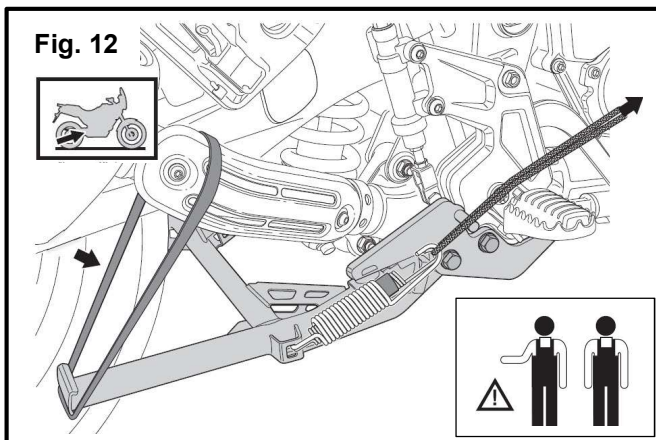
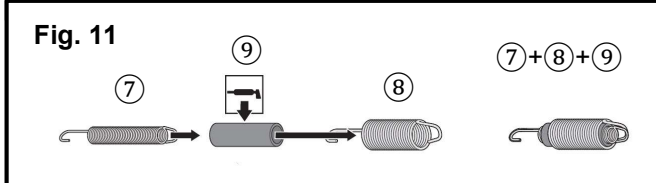
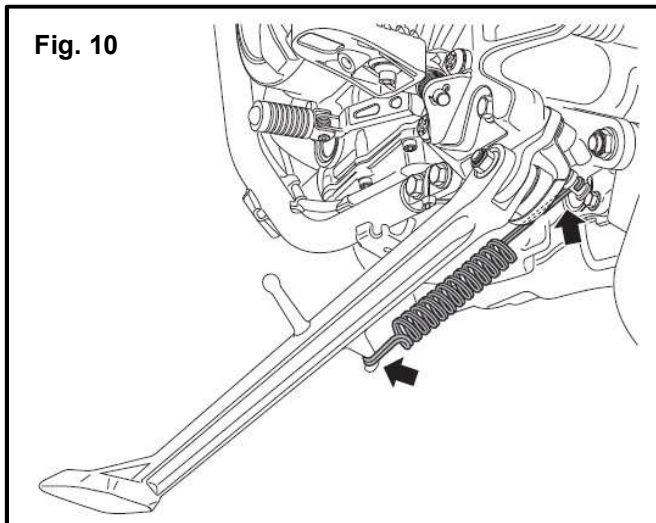
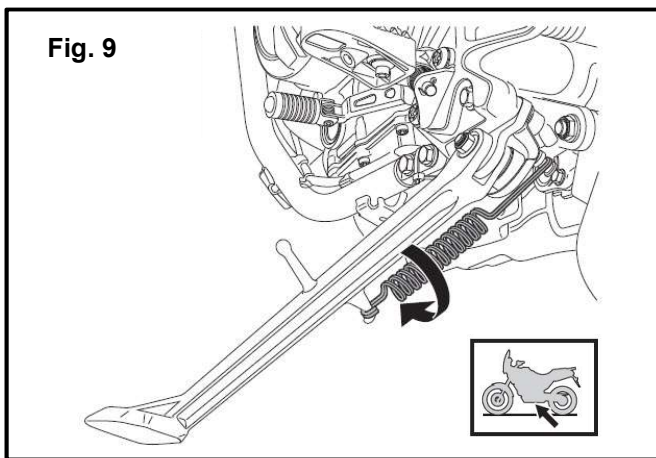
INSTALLATION:

1. Secure the Ténéré 700 with a rear axle stand. (Fig. 1)
2. Remove the stock skid plate and stock hardware. This will be reinstalled after the main stand kit is installed. (Fig.2)
3. Remove the two lower bolts under the right foot peg mounting bracket. These will not be reused. (Fig. 3)
4. Align the (3) Right Mounting Bracket under the right foot peg and thread two (13) M10x60mm Hex Head Bolts with two (17) M10 Washers into the mounting holes. Torque to 45Nm (4.5 kg-m or 33.0 lb-ft) (Fig.3 and 4)
5. On the left side of the motorcycle, remove the two lower bolts below the left foot peg. They will not be reused. (Fig. 5)
6. Thread the two (14) M8x75mm Hex Head Bolts with two (16) M8 Washers into the same location as the bolts removed in Step 5 and torque to 30 Nm (3.0 kg-m or 22 lb-ft). (Fig. 5)



7. Insert two (4) Spacer 8.5mm over the threaded ends of (14) M8x75mm Hex Head Bolts. (Fig. 6)
8. Assemble the (2) Left Mounting Bracket by inserting a (12) M10x55mm Hex Head Bolt with one (17) M10 Washer through the top hole in the bracket. Add thread locking fluid to the threads of the bolt. Insert the (5) Spacer 10.5mm over the threaded end of the (12) M10x55mm Hex Head bolt. (Fig.6)
9. Install the (2) Left Mounting Bracket Assembly over the (14) M8x75mm Hex Head Bolts and thread two (15) M8 Flanged Nylon Locking Nuts onto the bolts. Thread the (12) M10x55mm Hex Head in to the frame.
10. Tighten the (15) M8 Flanged Nylon Locking Nuts to 30Nm (3.0 kg-m or 22.0 lb-ft) and the (12) M10x55mm Hex Head to 45Nm (4.5 kg-m or 33.0 lb-ft).
11. Assemble the (1) Main Stand by installing two (6) Flanged bushings into the pivot points on the (1) Main Stand. Insert the (18) M19 Washer on the right (6) Flanged Bushing. Lubricate with a small amount of grease to allow the (1) Main Stand to hinge freely. (Fig. 7 and 8)
12. Assemble the mounting bolts by inserting one (17) M10 Washer over each (10) M10x40mm Hex Head Bolt. (Fig. 8)
13. Fold down the side stand to make room to install the (1) Main Stand. (Fig. 8)
14. Lift the (1) Main Stand into position and insert the (10) M10x40mm Hex Head Bolts through the (2) and (3) Mounting Brackets and through the pivot points on the (1) Main Stand. (Fig. 8)
15. Thread (11) M10 Flanged Nylon Locking Nuts onto the (10) M10x40mm Hex Head Bolts and tighten to 70Nm (7.1 kg-m or 51.6 lb-ft). (Fig. 8)





16. Remove the side stand spring and rotate it 180 degrees then reattach the spring. (Fig. 9 and 10)
17. Lubricate the ⑨ Spring Sleeve inside and out. Slide it over ⑦ Spring 1.
18. Slide both parts into ⑧ Spring 2 and align the spring hooks long for long and short for short. (Fig. 11)
19. Secure the ① Main Stand to the exhaust pipe in the up position. Hook the short end of the spring assembly to the mounting location on the right leg of the ① Main Stand. (Fig. 12)
20. Have an assistant loop a rope around the other end of the spring assembly and pull it to the mounting peg on the ③ Right Mounting Bracket. Slide the hook over the mounting peg and remove the rope. (A spring puller tool works too.) (Fig. 13)
21. Reinstall the stock skid plate and torque to 15 Nm (1.5 kg-m or 11.0 lb-ft).

MAINTENANCE:

Periodically, check torque on all hardware. If loose hardware is found, re-torque to specification.

CARE AND CLEANING:

Clean painted metal parts with a clean soft cloth and mild soap and water solution. Rinse and dry.

CUSTOMER SERVICE:

For further information see your Yamaha dealer.

ESTIMATED TIME TO INSTALL: 0.5 HRS.

